



How to install / use Custom Firmware (or CFW) on any Sony PSP

Scope: This document is intended to enable you to use Custom Firmware on your Playstation Portable console. It will work as a permanent install for PSP models in the 1000 and 2000 series, and will also function on later models as a loader that can be initiated at the start of each play session.

Notes:

- **I did not write this firmware! Credit for this goes to DJ Godman!**
- This process is reversible, although as with any hack there is an unlikely chance you might brick your system. I cannot take responsibility for any issues you might encounter.
- I have used this process countless times with no problems.
- Although this process will allow the playing of pirated ISO files, I do not endorse nor condone piracy, and this process is described to allow you to use homebrew PSP games, emulators or your own ripped software that you own.

Please read the entire document first and then you will be able to use it for reference as you hack your PSP!

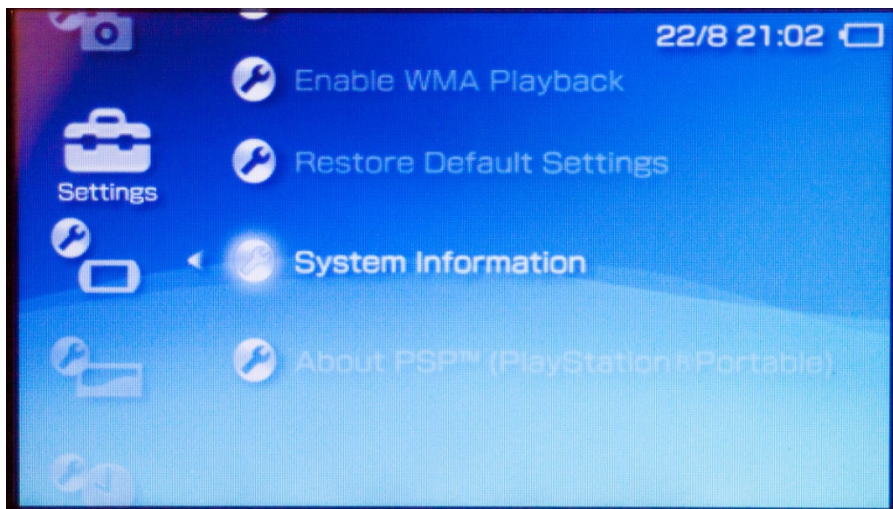
Process:

1. Determine your current Official Firmware (OFW) Version.

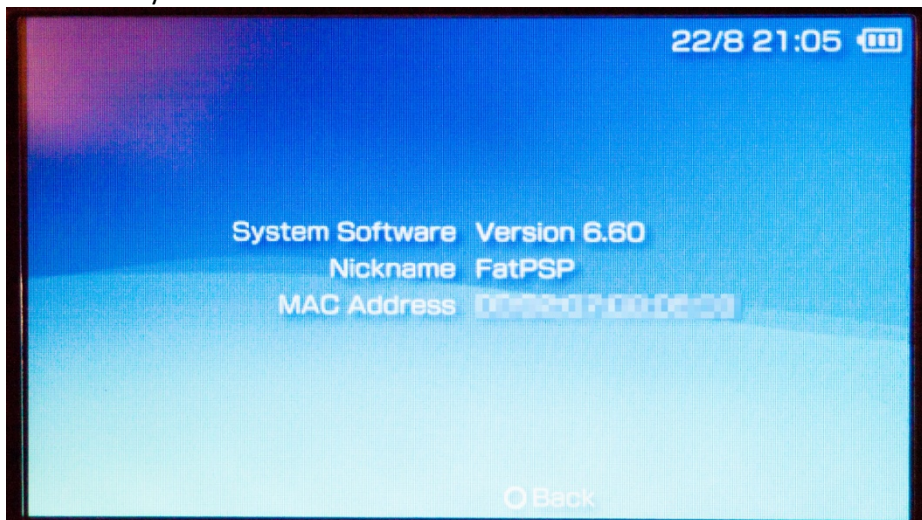
From the dashboard select **Settings**, then **System Settings**.



Then **System Information**.



You will see your PSP's official firmware version. Here it's 6.60. **You will need at least 6.20!!!**



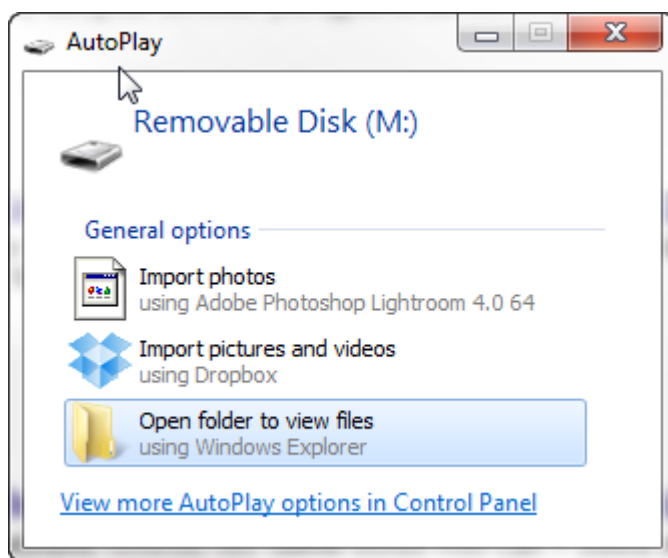
2. Preparing the Memory card.

For this example I have formatted a blank 2gb Sony Pro-Duo memory stick in my PSP. Doing this creates all the folder structures fresh, but **WILL DESTROY ANY DATA INCLUDING SAVEGAMES!!!!**

You don't *need* to format the card but I wanted this guide to be as clear and uncluttered as possible.

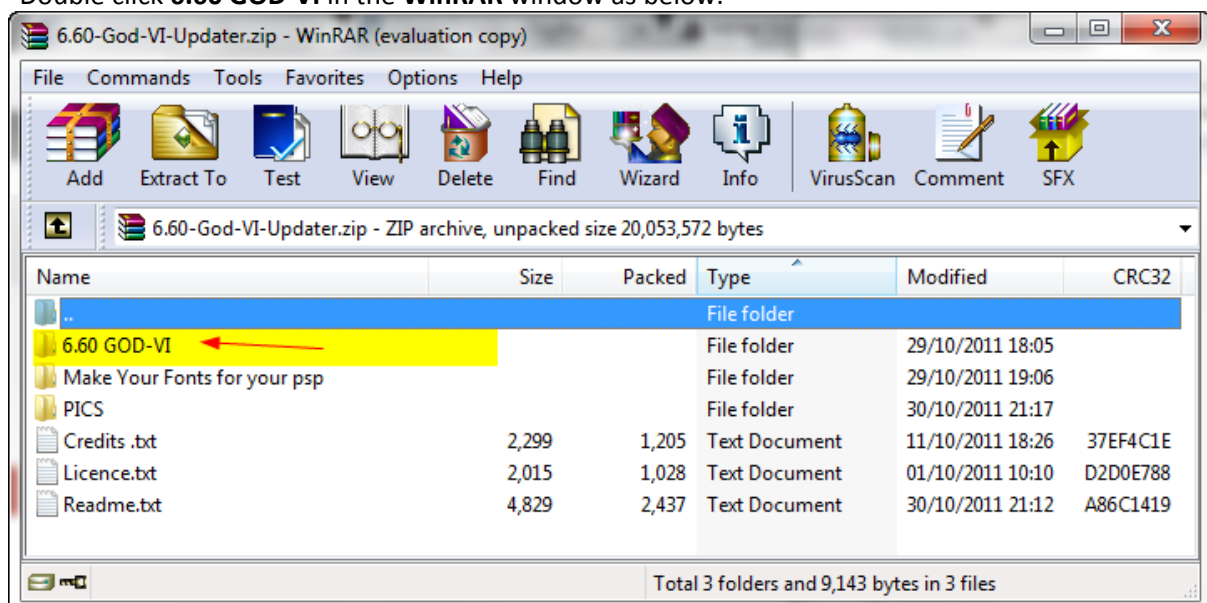
Next I put the card into a standard PC Card reader. *You can also do this by connecting the PSP to the PC with a USB cable and selecting the **"USB Connection option"** in **Settings** in the PSP's menu.*

If you have AutoPlay enabled, you will get a popup like this. Just select **"Open folder to view files"** otherwise open the removable drive via **My Computer**

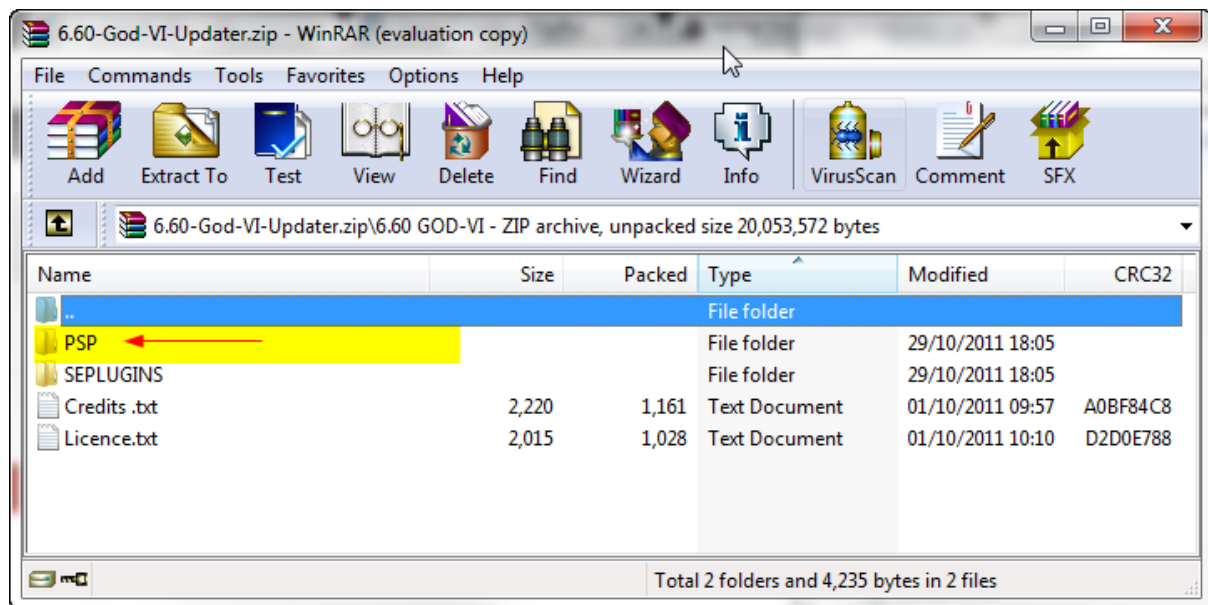


Now, open the zipfile **"6.60-God-VI-Updater.zip"** that you have downloaded. I'm using **WinRAR** here, but **WinZip** or Windows own built in unzipping routine will work just as well.

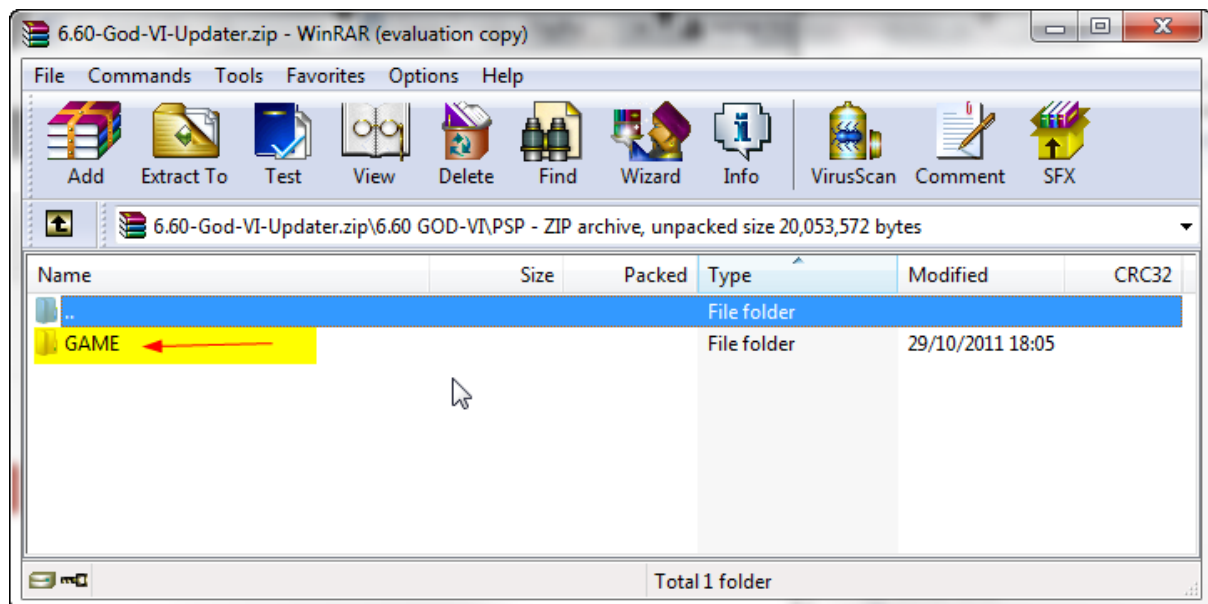
- Double click **6.60 GOD-VI** in the **WinRAR** window as below.



- Next double click **PSP**.

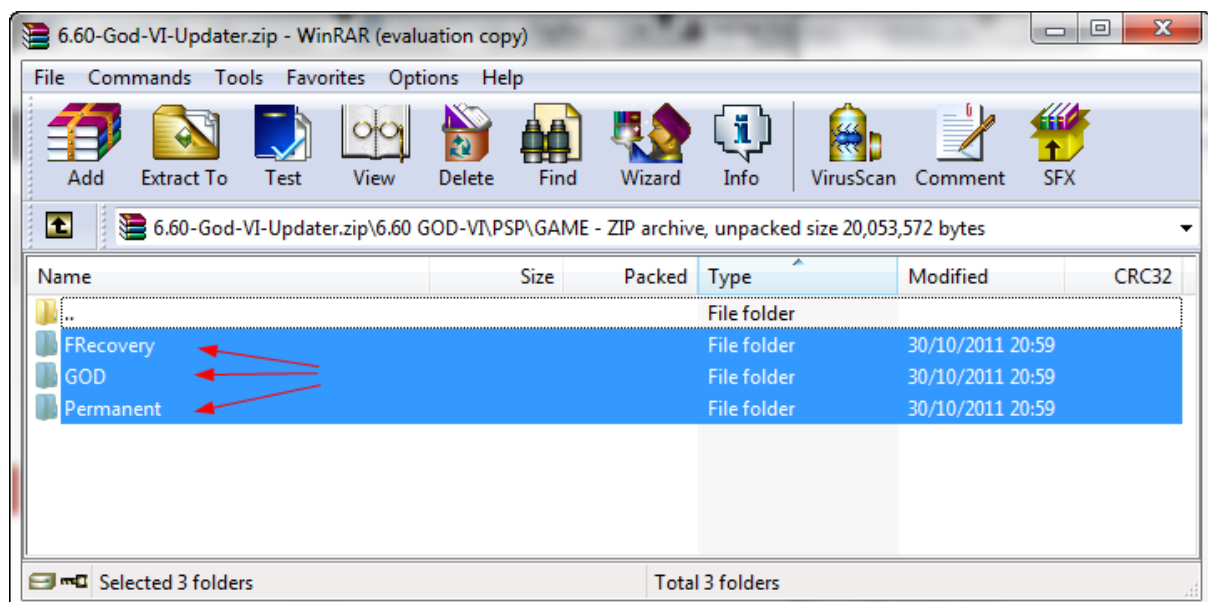


- Then double click **Game**.



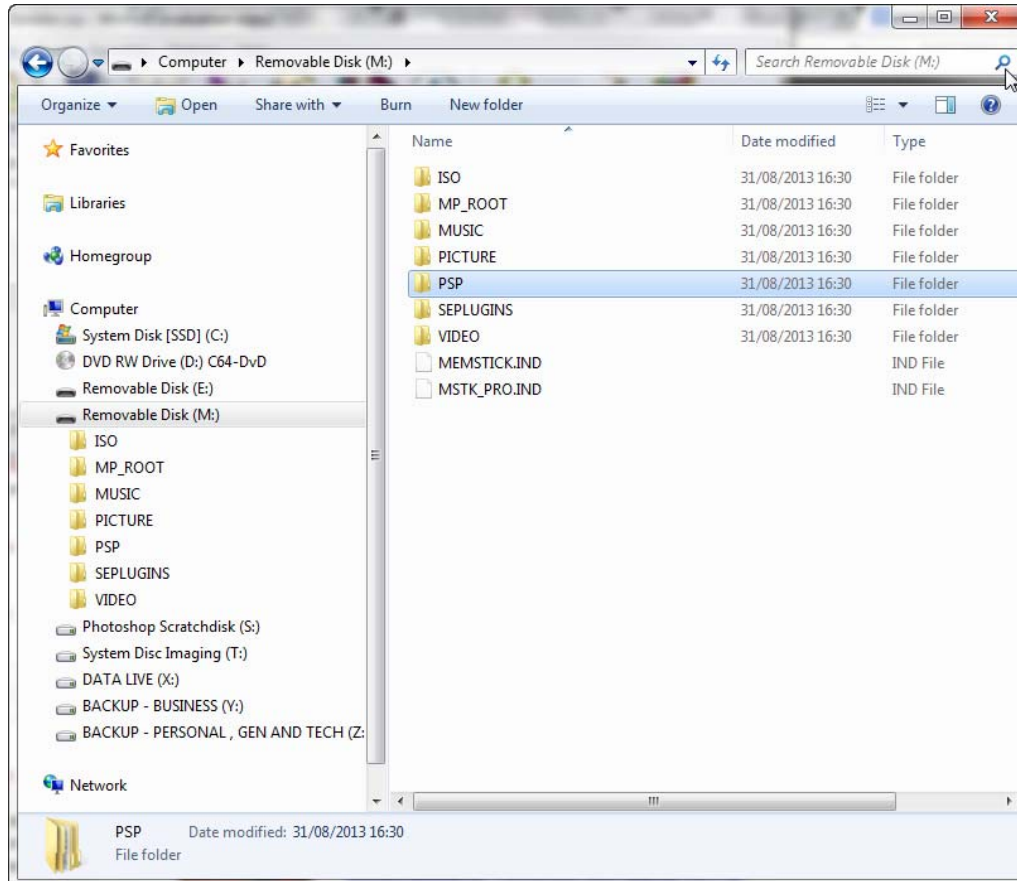
- Now you will see three folders.

We are going to copy these folders *and their contents* into the directory **\PSP\Game** on your PSP memory stick

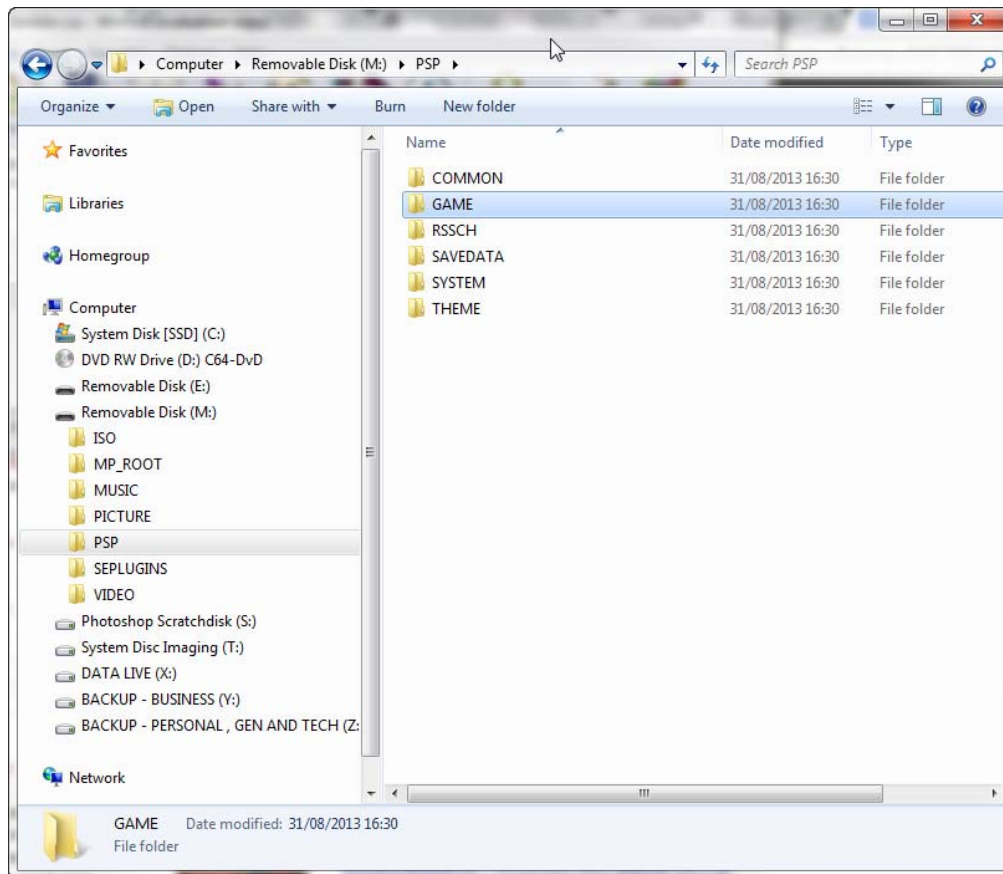


- Now go to the window that opened up when you inserted your memory stick (or connected your PSP.)
*N.B. If a window or a prompt did ***not*** open at that point, look in **My Computer** under **Devices with Removable Storage** and find the one that contains the PSP folders you can see in the screenshot.*

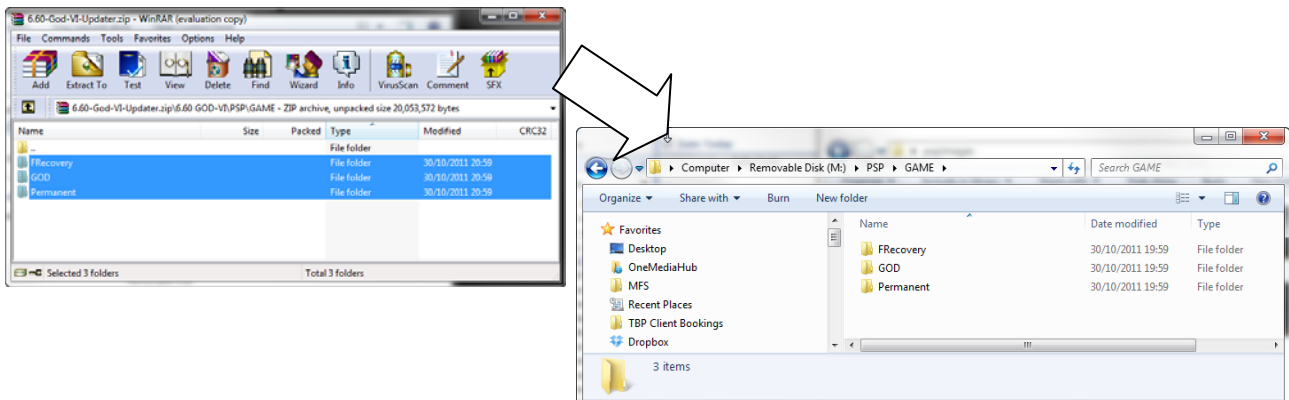
- Double click on **PSP**.



- Double click on **Game** to open the directory.



Now you are in the Game folder, go back to the WinRAR window, highlight and drag and drop the the three folders across



That completes the preparation of the PSP memory card. In summary, you have done the following:

- Opened the RAR file
- Connected your PSP via USB or Inserted the PSP memory card
- Copied the content of the **Game** folder in the zip file into the **Game** folder on the PSP memory card.

Now you can move onto section 3 - Installing the CFW!

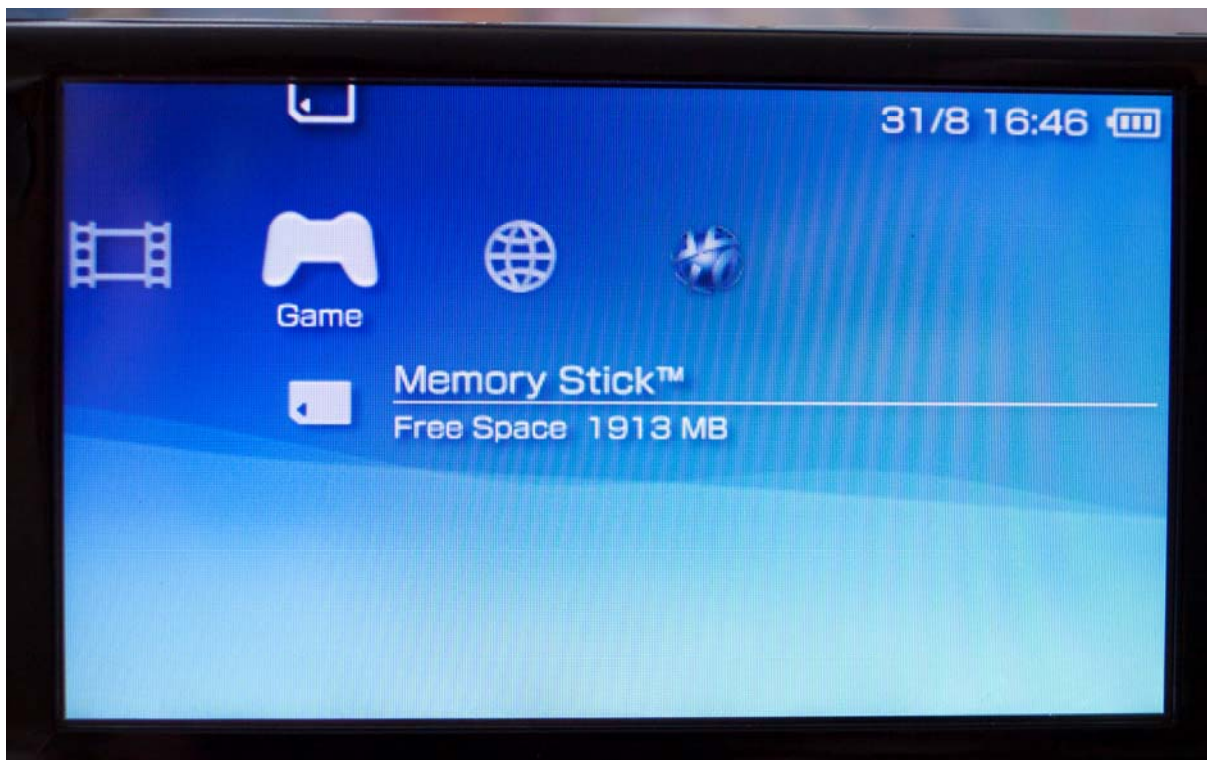
3. Installing the CFW

- If you have put the **memory stick in your PC card reader**, take it out and put it in your PSP and turn it on.

- If you have **connected your PSP via a USB cable**, remove the USB cable and reboot the PSP.

Now we will run the **Custom FirmWare (CFW)**.

Navigate to **Memory Stick** on the **Game** menu



Press **[X]** on the PSP and the Memory card will load what it thinks are "Games" but are in fact the hack loaders which will let us modify our PSP.

There are three items as you will see in the screenshot on the next page.



- **GOD-X FRecovery (or Fast Recovery):** If you have a PSP model that cannot be *permanently* installed with Custom FirmWare, this option will reboot your PSP in a CFW state with one click. *This only takes seconds and if you always use sleep mode then you will not have to do this very often anyway.*
- **GOD-X CFW:** The Custom Firmware installer itself. We will be using this first.
- **GOD-X Permanent:** If you have a 1000 or 2000 series PSP, running this *after* the CFW installation will make your PSP automatically boot into the Custom FirmWare even after a full power off or battery removal! Any other models you will need to use the FRecovery as above.

At this point please ensure you are plugged into an AC adapter or at least confirm that you have a full battery. Neither I nor DJ Godman can be held responsible in the unlikely event that you brick your PSP!



As you can see the earliest Official firmware version supported by this CFW is 6.20, and this doesn't support some of the later generations of PSP. Updating your PSP to Version 6.60 means that all PSP versions are supported.

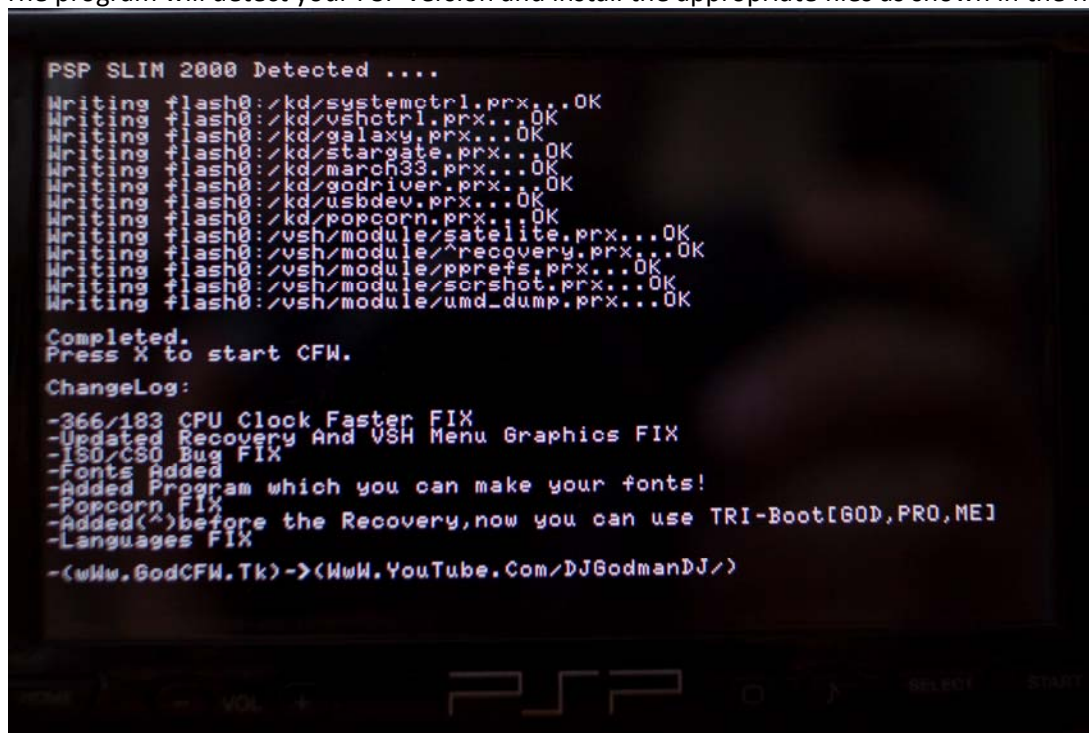
Select the middle option "**GOD-X CFW**". The PSP will then boot to the above screen.

Actions we can take here:

- Pressing [X] will launch GOD (will install it)
- Pressing [Triangle] will uninstall GOD
- Pressing the [Right] shoulder button will exit

We need to Press [X]

The program will detect your PSP version and install the appropriate files as shown in the next screen..



The installer has now written the files to the flash memory of the PSP that we can use to run the CFW, and either Fast recover to the CFW in future or even set permanently if you have a 1000 or 2000 model PSP.

- Press **[X]** to reboot your PSP with its new CFW!

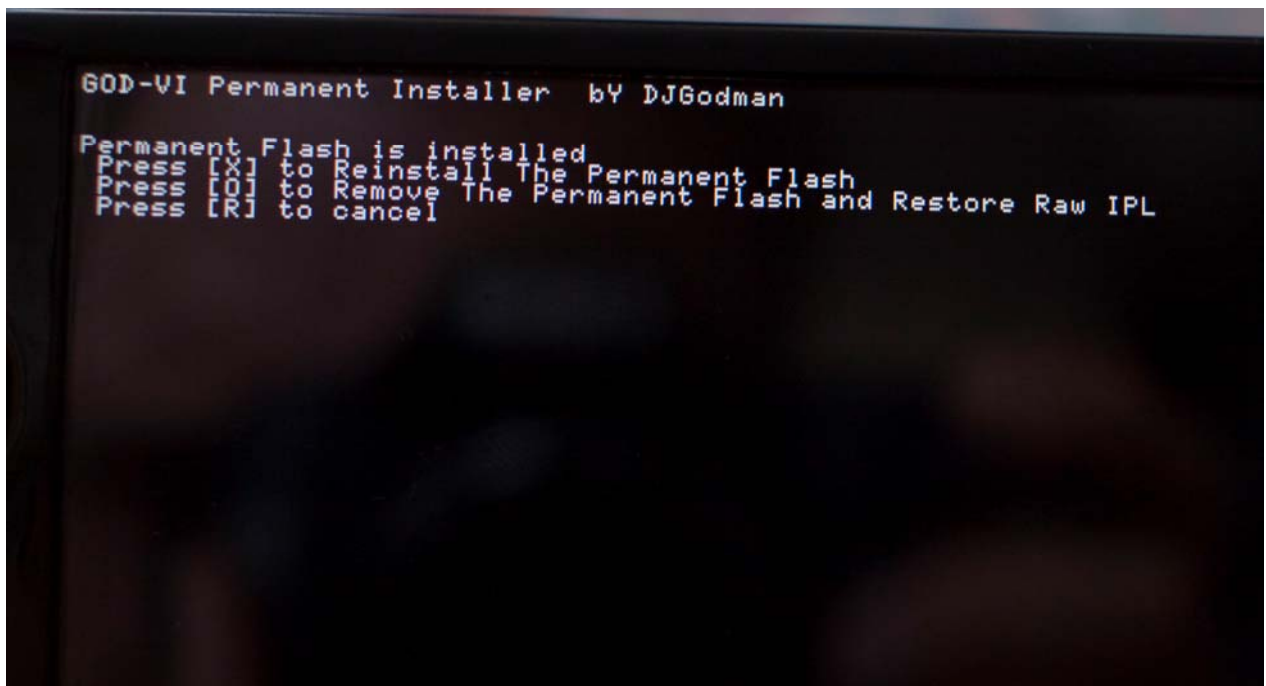
Unless you have a 1000/2000 series PSP, the process is now complete. On 3000 and later models to return to the CFW after a cold boot just run the fast recovery option from the memory stick (PSP Menus/Game/Memory Stick). Even though this is not permanent it's very fast.



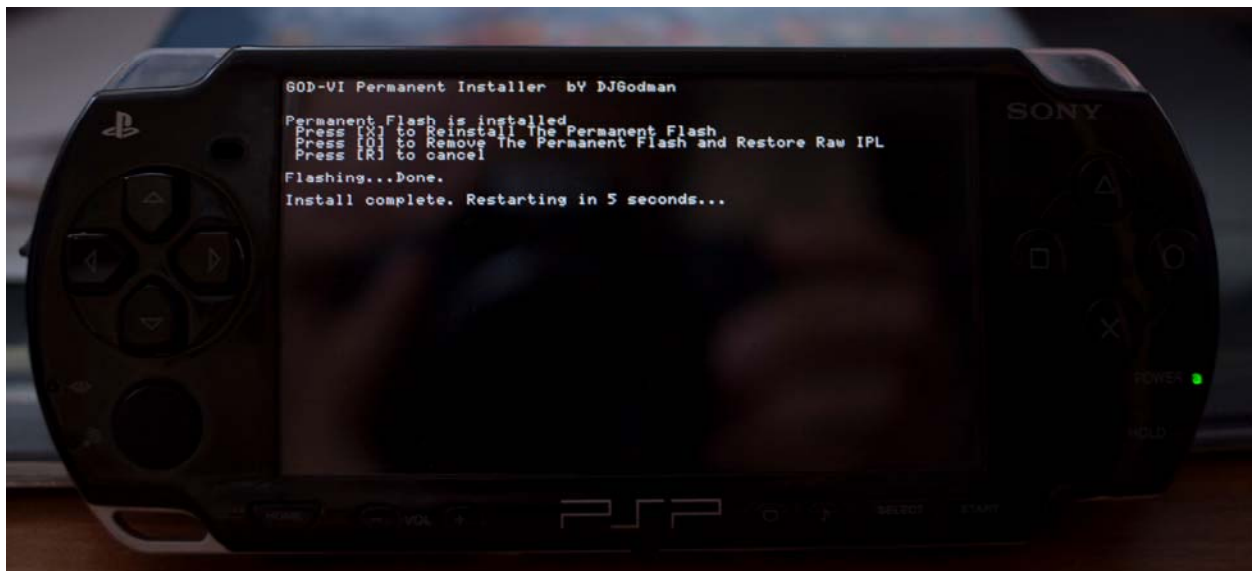
4. (Optional) Permanent installation for 1000/2000 series PSP models.

On these older models you can make the CFW boot automatically for added convenience.

Go back to the Games / Memory stick option in the PSP menu and select "**GOD-X Permanent**"



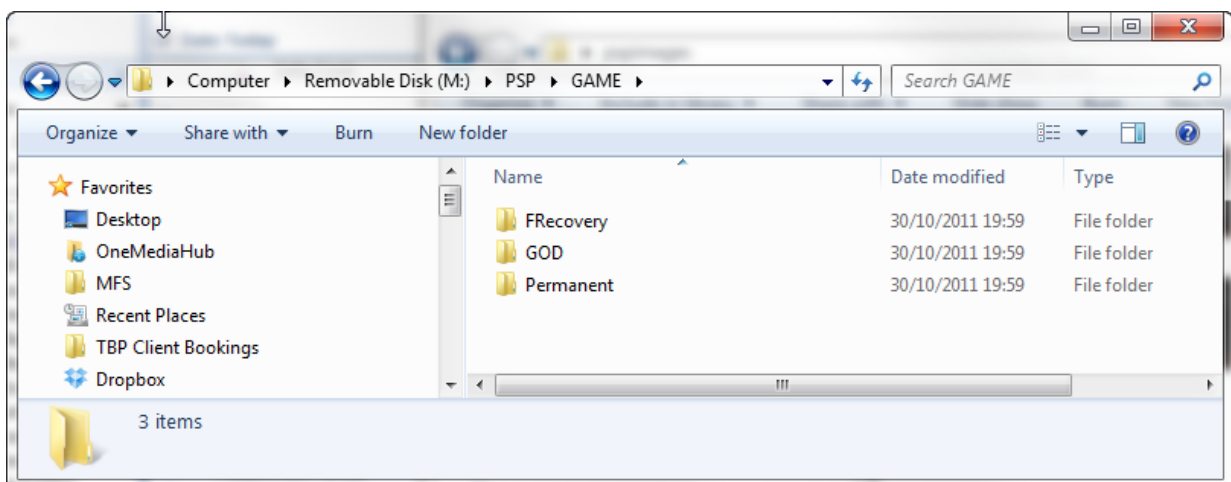
As you can see, the permanent flash is already installed on mine, but the options are the same and **you** need to press [X]...



Pressing [X] will permanently flash the PSP 1000/2000 models so they *always* boot into CFW. It will not work on newer models as Sony removed the ability to write the flash on those machines.

5. (Optional) Cleaning Up!

Once you have flashed your PSP you can delete the following files from the PSP memory stick, depending on whether you have a permanent flash or Fast Recovery model.

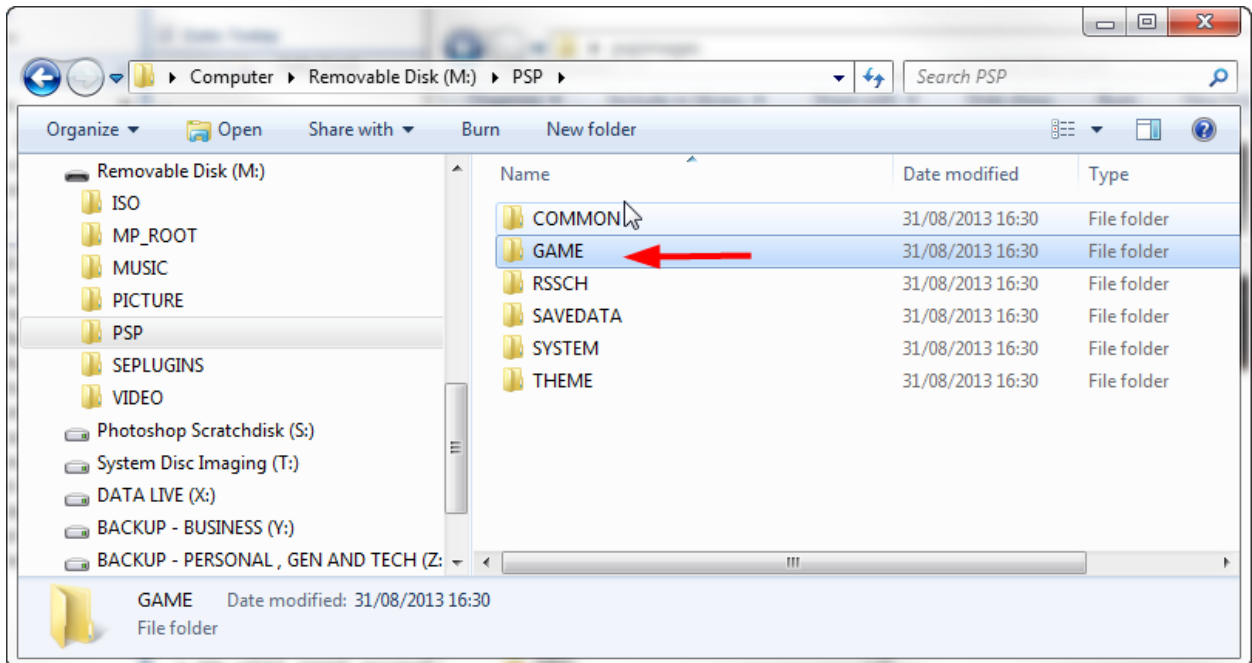


- If you have a 3000 series or later model you can delete the **GOD** and **Permanent** folder, but need to **leave the FRecovery folder** for fast recovering into the CFW after a cold reboot.

- If you have a 1000 or 2000 series model, and have performed the permanent installation as step 4 above, then **you can safely delete all three folders**.

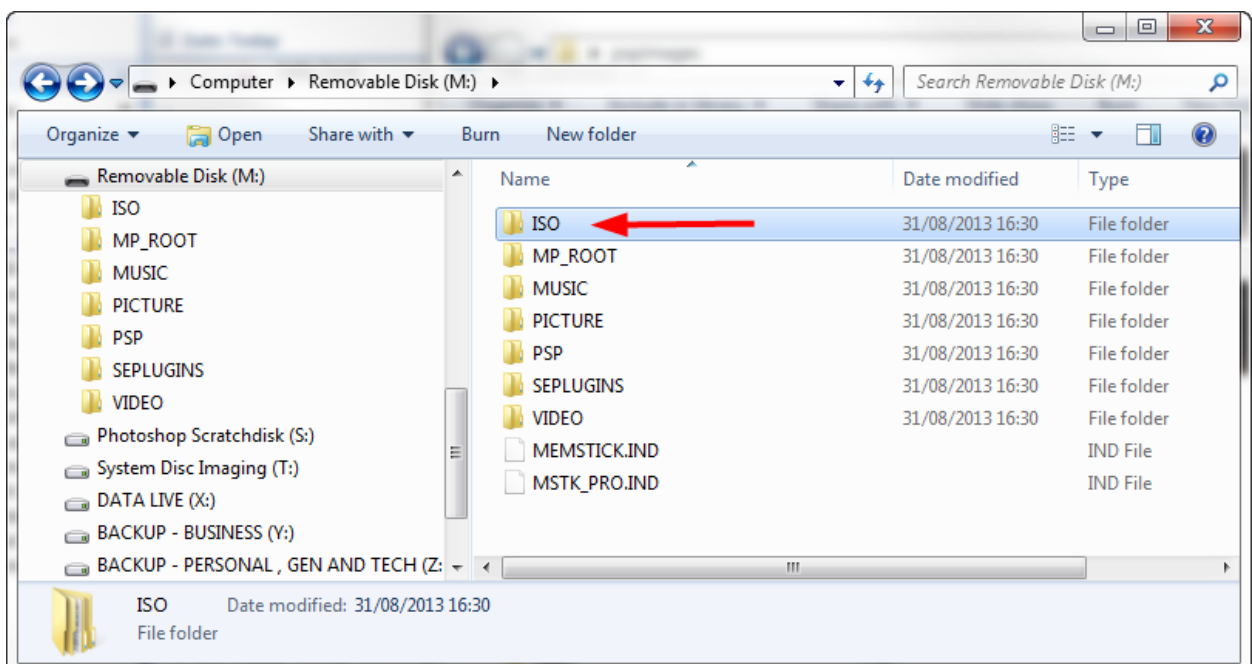
6. Running Homebrew and ISO/CSO files

If you have a folder containing a homebrew program, such as an emulator, simply place the whole folder in the PSP\Game folder on the memory stick (in the same place as you put the GOD-X files).



The emulator should then show up in the games list on the memory card.

If you have a LEGAL self ripped or downloaded .ISO (or compressed .CSO) file, you need to place them in the ISO folder. If the ISO folder doesn't exist it's fine to create it (UPPER case)



ISO images will then also show up in the PSP's Game/Memory stick menu.

The End: That's all folks!

As a simple recap.

1. Extract the three zipped folders to the **PSP\Game** folder on the PSP memory stick
2. Run the GOD-X CFW from the PSP's **Game/Memory Stick** menu
3. Either run the permanent installer for 1000/2000 models, or run the FRecovery at each cold boot.

Further Information:

I hope you've found this guide useful. For other guides, files etc please visit me at:

Web	http://www.markfixesstuff.co.uk
Facebook	http://www.facebook.com/markfixesstuff
Youtube	http://www.youtube.com/markfixesstuff
Twitter	http://www.twitter.com/markfixesstuff

Massive thanks to DJ Godman who wrote the Custom Firmware!